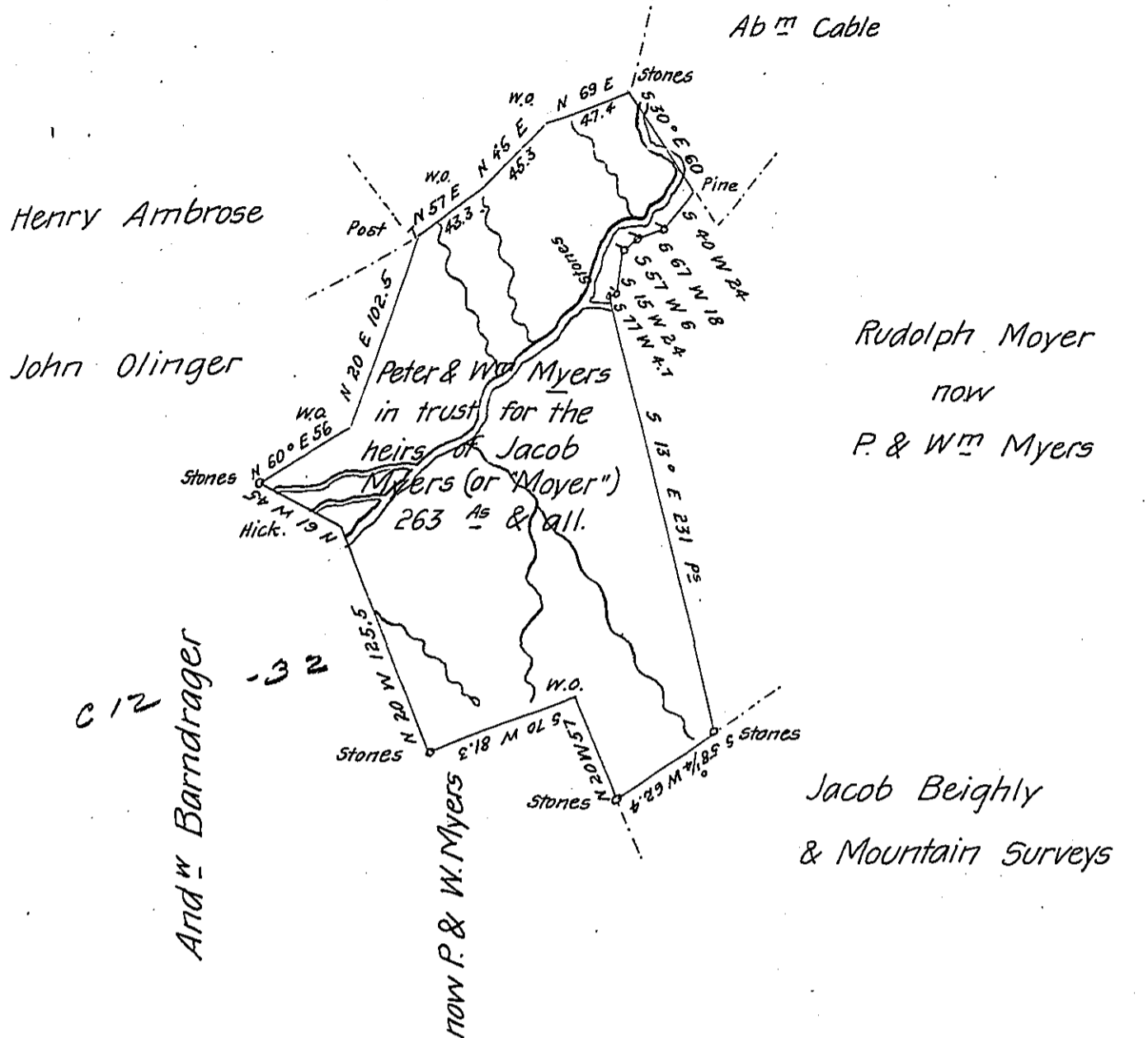


John Ambrose



Situate on the waters of Flaherty creek, in Brothers valley & Elklick Townships, Somerset County, including an improvement; and (having been previously Surveyed) returned 26th Jan^y 1839 in Pursuance of a Warrant dated 31st January A.D. 1838 by Bernard Connelly Jr. late D.S. And now Examined and Returned August 13th 1840

Pr. H. L. Holbrook Deputy

To Jacob Sallade Esqr
Surveyor General

IN TESTIMONY that the above is a copy of the original remaining on file in the Department of Internal Affairs of Pennsylvania, made conformably to an Act of Assembly approved the 16th day of February, 1833, I have hereunto set my Hand and caused the Seal of said Department to be affixed at Harrisburg, this twenty seventh day of March 1906

Geo. P. Brown
Secretary of Internal Affairs.